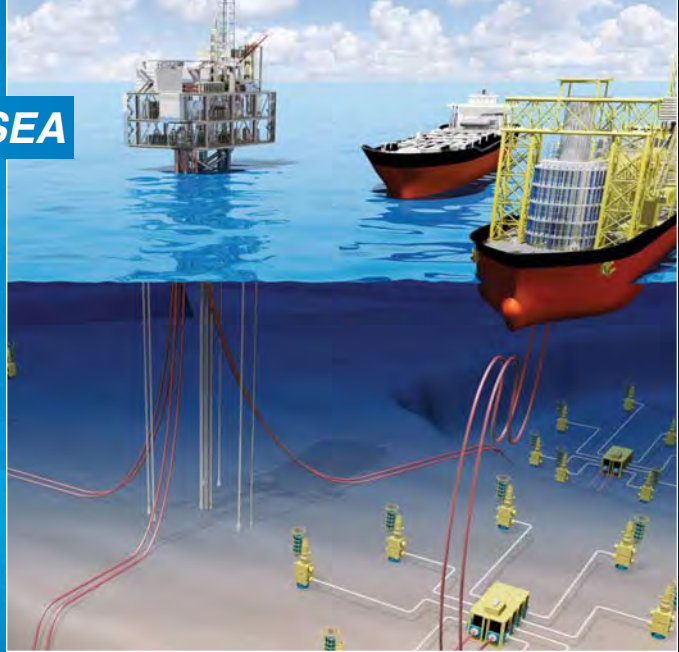


**SUBSEA**



Pressure, Load/Force/Torque, Displacement, and Temperature Sensors

[stellartech.com](http://stellartech.com)

# Subsea Solutions



## Pressure Sensors

- Pressure Ranges From 1 to 100,000 psi
- Absolute, Gage, Differential, Vacuum, Barometric
- All Welded Stainless Steel, Inconel/Hastelloy/Monel
- Accuracies to 0.05% of Full Scale Output
- Designs Submersible to 12,000 ft. Seawater
- ATEX, CSA, ABS Certifications
- Analog and Digital Outputs (Including CANbus/MODbus)
- Custom Engineering Specials
- Proven Field Reliability

## Load Cells, Force Sensors, Reaction Torque Sensors

- Load Ranges From 10 lbf to 2 million lbf
- Tension, Compression, Tension & Compression
- All Welded Stainless Steel and Specialty Metals
- Comprehension Selection of Configurations and Sizes
- Designs Submersible to 12,000 ft. Seawater
- Analog and Digital Outputs (Including CANbus/MODbus)
- Application Specific Special Designs
- ATEX, CSA Certifications
- Proven Application Reliability

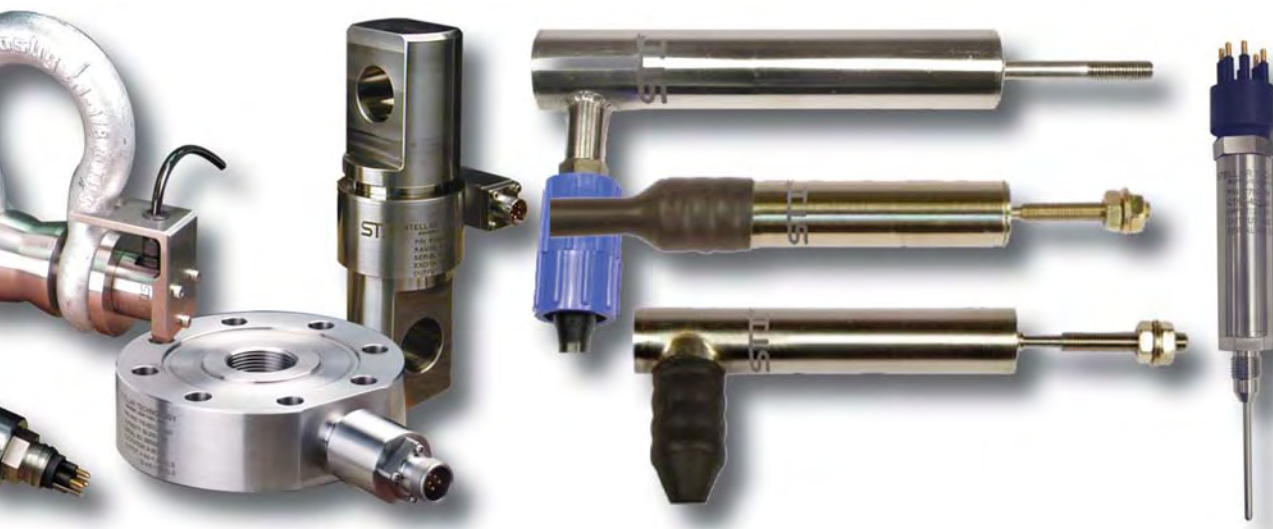


Our Specialty...  
**CUSTOM  
ENGINEERING**

## Sensors for Oil and Gas Applications

Stellar Technology designs and manufactures a complete line of pressure, load/force, temperature, torque, and displacement sensors for subsea, offshore, and onshore test, measurement, and control applications. STI's engineering expertise, proven designs, field experience, and manufacturing capabilities provide customers with high reliability sensor application-solutions with both existing products and modified and/or custom-engineered products. From sensors for AUV and ROV applications to tension-link monitoring systems to enhanced oil recovery systems, STI sensors provide added value for our customers.

# SubSea Solutions

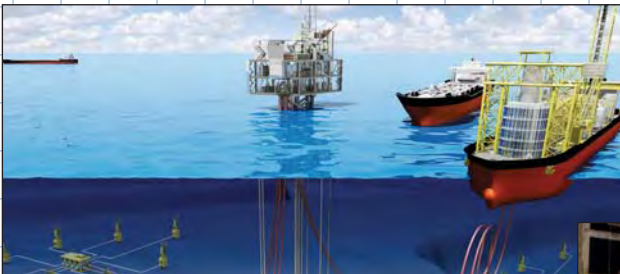


## LVDT Displacement Sensors

- Stroke Ranges from  $\pm 0.5$  in. to  $\pm 4$  in.
- Free, Unguided Armature
- All Welded Stainless Steel
- AC and DC Versions
- 1% Linearity
- Designs Submersible to 7,500 ft. Seawater
- Designed to Overcome Marine Growth Problems

## Temperature Transducers and Transmitters

- Temperature Ranges From  $-320^{\circ}\text{F}$  to  $+800^{\circ}\text{F}$
- Customer Specified Probe Lengths
- No Thermo Well Required
- All Welded Stainless Steel and Specialty Metals
- Dual Temperature and Pressure Configurations
- Designs Submersible to 12,000 ft. Seawater
- Analog and Digital Outputs (Including CANbus/MODbus)
- Intrinsically Safe Versions



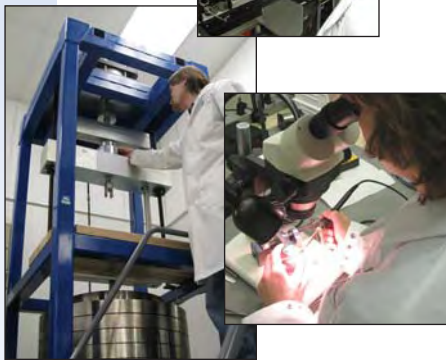
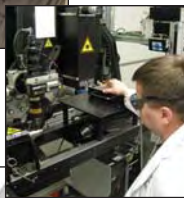
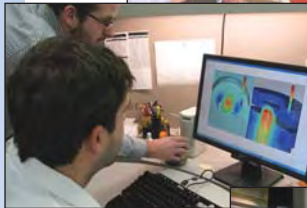
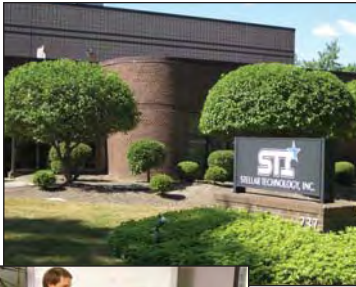
- Increased oil recovery systems
- Subsea separation and re-injection systems
- Instrumented safety systems
- AUV/ROV position, pressure, force, and torque measurements
- HP/HT tree and wellhead monitoring and control
- Underbalance drilling measurement and controls
- MWD and LWD pressure measurements

- Well intervention and well stimulation systems
- Nitrogen generation skids
- Marine loading systems
- Pipeline asset integrity monitoring and control
- Oceanographic mapping and towing arrays
- Subsea manifolds and tie-ins
- Subsea separation, boosting, and processing systems
- Tension link force monitoring
- Hazardous environment measurements
- Kill and choke manifold monitoring
- Subsea fluid control systems

Call: **716.250.1900**

# Capabilities

Stellar Technology designs and manufactures a comprehensive offering of pressure transducers/transmitters, load cells, force sensors, torque transducers, temperature transmitters, and displacement sensors used in test and measurement applications across a wide range of industry sectors including aerospace, oil and gas, marine/oceanographic, automotive, medical, industrial automation, geophysical, power generation and many more.



**Why Stellar Technology?** What causes customers to choose Stellar Technology for their subsea and off-shore top side sensor application solutions?

## **One word: Capabilities.**

Stellar Technology combines sales capabilities, engineering capabilities, manufacturing capabilities, and service/support capabilities into one focused business objective:

**Provide the customer with the optimum sensor solution.**

### **Sales Capabilities:**

- Experienced technical sales professional located in your area
- Direct link to STI design engineers
- Knowledgeable inside sales engineers
- Complete pre-sales application review process
- Facilitate technical Lunch & Learns at customer's site

### **Engineering Capabilities:**

- Design engineers with years of practical sensor application experience
- Specialists in mechanical, electronic, and software design
- Innovative design and simulation tools
- ISO9001:2000 registered documentation and control
- Work directly with customer's engineers
- Creative solution providers

### **Manufacturing Capabilities:**

- Complete vertical integration (raw material through final calibration)
- 18 CNC machines (up to 8-axis)
- Wire and probe EDM machining
- Laser and TIG welding
- Ultrasonic cleaning
- Micro assembly
- Automated pressure compensation and calibration
- 5 load cell calibration systems (to 600,000 lbf)
- 1,000,000 inch-lbf reaction torque calibrator
- High-reliability/traceability assembly and test area
- Comprehensive inventory of raw materials
- Finished goods inventory programs (standard and customer-specific)

### **Service/Support Capabilities:**

- Complete repair and recalibration (including non-STI manufacturers)
- Rapid-response on-site technical field support
- Ready access to regional sales offices
- Order status and expediting
- Direct access to STI's design engineers
- 24 hour web access to technical manuals

**Your Application-Solution Source<sup>SM</sup>**

Find More Information at:  
[stellartech.com](http://stellartech.com)

Due to the nature of technology, changes are inevitable. For latest technical specifications, see our website.

237 Commerce Drive • Amherst, NY 14228 • USA

**Tel:** 716.250.1900 • **Fax:** 716.250.1909

**Email:** [info@stellartech.com](mailto:info@stellartech.com)

